

MOEN® 摩恩®

规格书

描述

- 产品尺寸: 317 x 192 x 65mm
- 具有多种表面处理工艺
- G1/2接口
- 包含淋浴杆、手持花洒、1500毫米淋浴软管和1200毫米喷枪软管

操作

- 左侧旋钮为功能旋钮, 旋转旋钮切换出水模式
- 右侧旋钮为出水和温控旋钮, 旋钮指示标记在中间朝下位置时, 龙头默认为关闭状态, 顺时针旋转出水并调温, 旋转到尽头为全热水

流量

- 0.1兆帕时, 龙头水嘴的流量最小为6.0升每分钟; 使用手持花洒时, 流量不小于4.0升每分钟, 不大于9.0升每分钟

阀芯

- 主控陶瓷阀芯控制流量和水温, 分水陶瓷阀芯切换出水模式

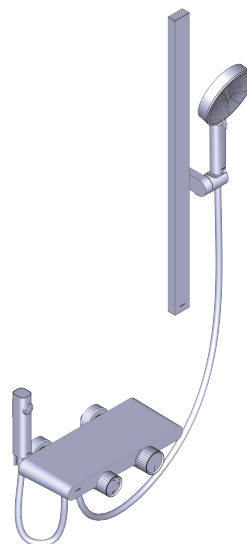
执行标准

(凡不注明日期, 即为最新版本)

- 符合GB 18145

质保期

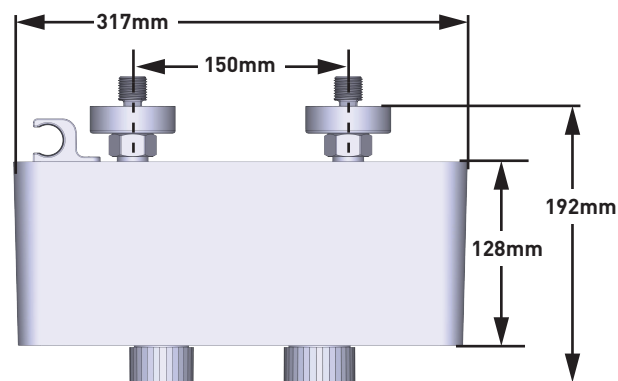
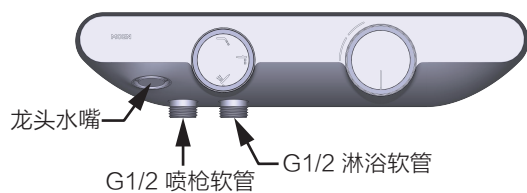
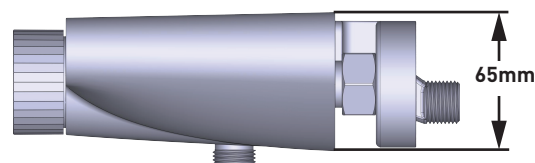
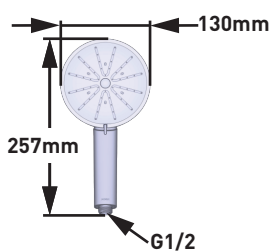
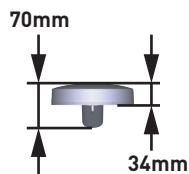
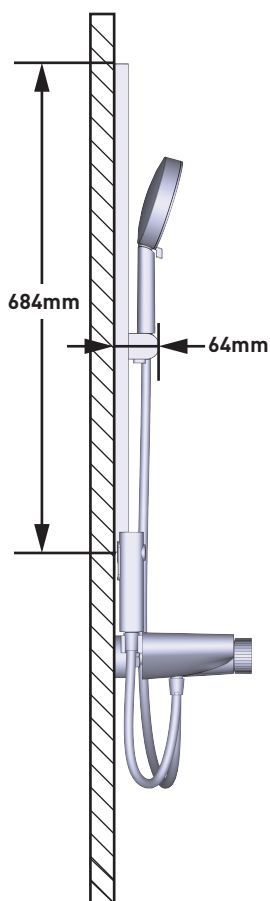
- 阀芯保修期为5年, 其他附件如软管、把手、混水器等保修期均为2年



内卡系列

墙装淋浴龙头套装

型号: SF23233S系列



MOEN® 摩恩®

SPECIFICATIONS

DESCRIPTION

- Product Dimensions: 317 x 192 x 65mm
- Various surface treatment processes
- G1/2 inlet connections
- Includes Shower Bar, Spray Gun, Hand Shower, 1500mm Shower Hose and 1200mm Spray Gun Hose

OPERATION

- The knob on the left is the function knob, rotate the function knob to switch the water outlet mode
- The knob on the right is for water flow and temperature control. When the knob indicator mark is in the middle upward position, the faucet is in the default off state. Rotating the knob turns on the water and adjusts the temperature. Rotating the knob to its limit provides full hot water

FLOW

- Flow rate at 0.1MPa is 6.0L/min minimum in Faucet Spout, about 4.0L/min to 9.0L/min with Hand Shower

CARTRIDGE

- The Ceramic Main Control Cartridge controls the flow rate and water temperature, and the Ceramic Diverter Cartridge switches water outlet mode

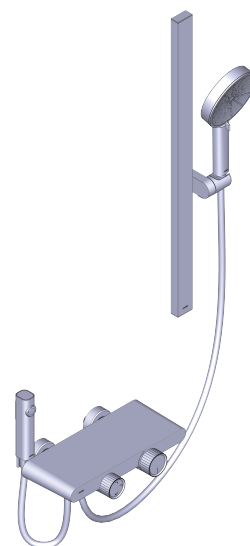
STANDARDS

(Unless otherwise dated, it is considered to be the latest version)

- Conforms to GB 18145

WARRANTY

- 5-year limited warranty for cartridge, 2-year limited warranty for other accessories (Including hose, handle, aerator, etc.)



NECKAR Series

Shower Faucet

MODELS: SF23233S Series

