

零件清单

- A. 龙头本体
- B. 法兰组件
- C. 螺母组件
- D. 控制盒组件
- E. 出水管
- F. 进水管
- G. 电源适配器
- H. 混水阀组件 (选配)

Parts List

- A. Faucet Body
- B. Flange Assembly
- C. Mounting Nut Assembly
- D. Control Box Assembly
- E. Outlet Hose
- F. Inlet Hose
- G. Adapter
- H. Mixing Valve (option)



移除旧龙头注意事项:

拆除现有水龙头或拆卸阀门之前, 请务必先关闭供水。打开水龙头手柄以释放水压, 确保完全关闭水源。

CAUTION — TIPS FOR REMOVAL OF OLD FAUCET:

Always turn water supply OFF before removing existing faucet or disassembling the valve. Open faucet handle to relieve water pressure and ensure that complete water shut-off has been accomplished.

图标图例 Icon Legend



警告
Warning



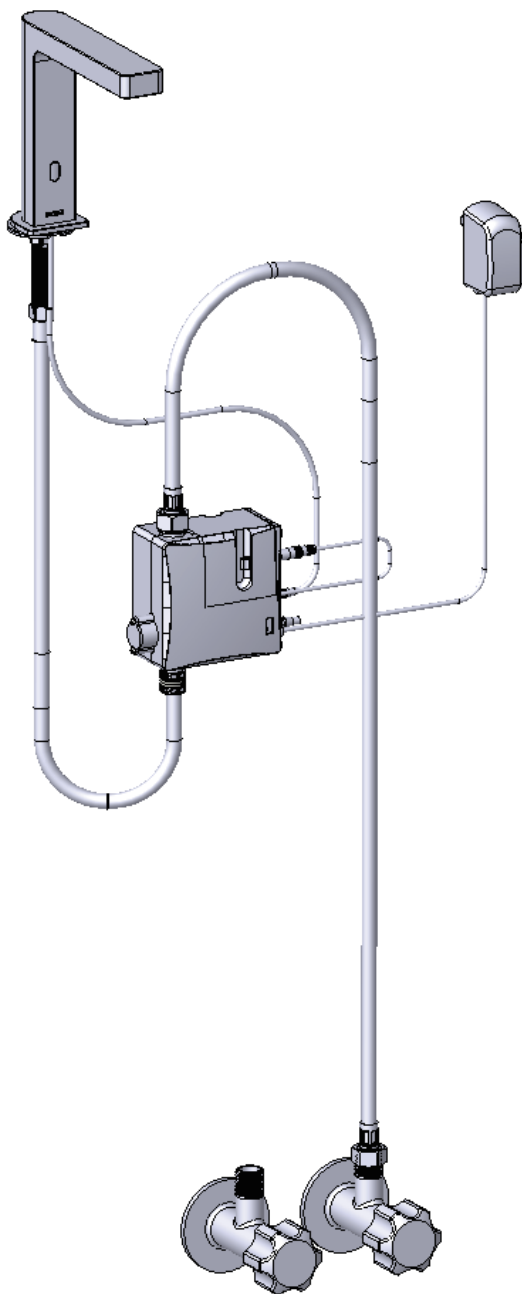
水槽上方
Above sink



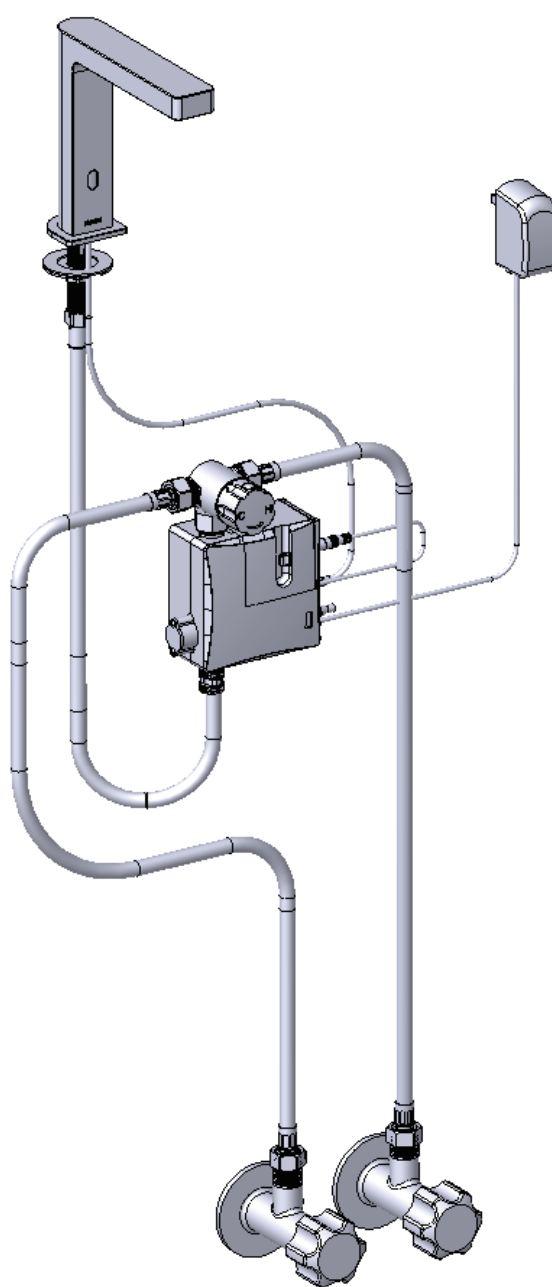
水槽下方
Below sink

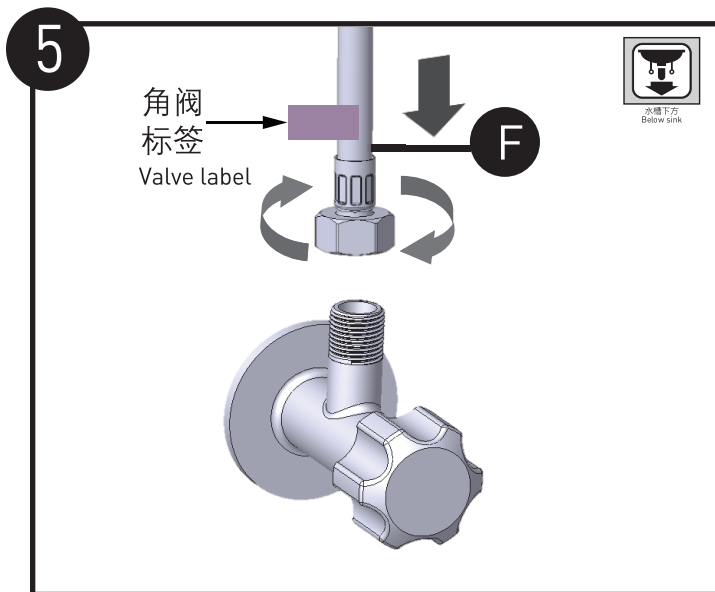
产品配置 Product Configurations

单冷水 (不加混水阀)
Cold water only (no Mixing Valve)



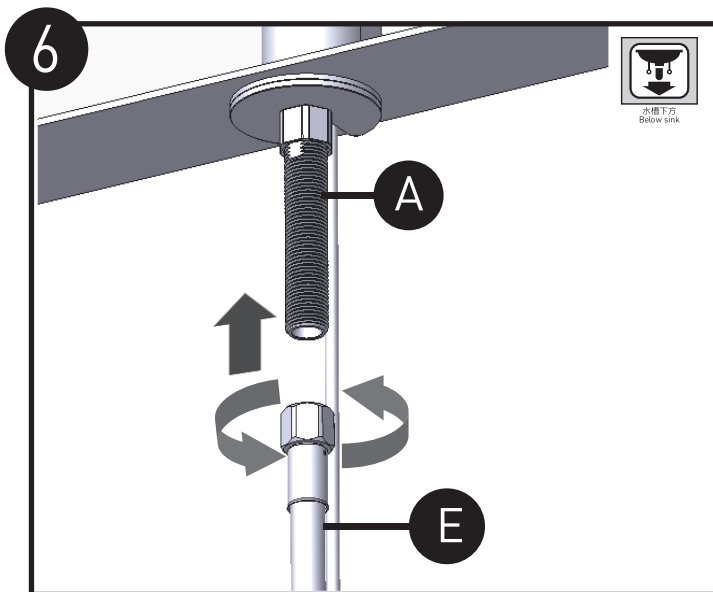
冷热水 (加混水阀)
Cold and hot water (with Mixing Valve)





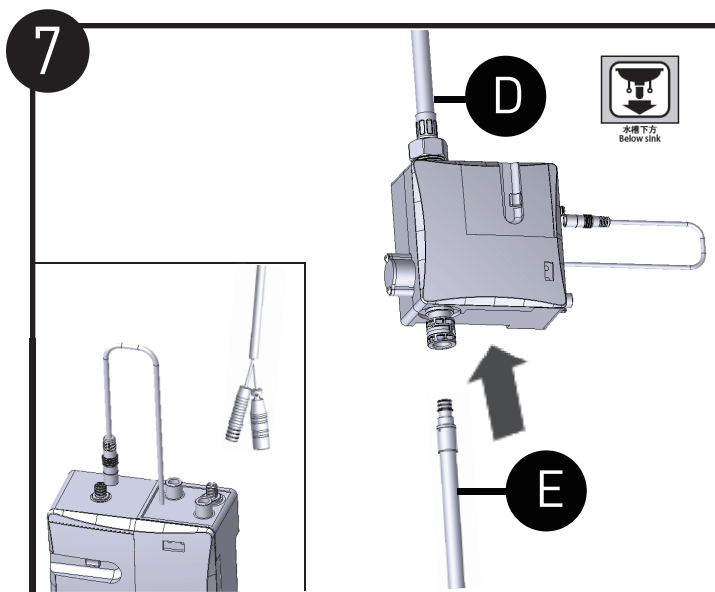
将进水管 (F) 与进水角阀连接并固定。

Connect the Inlet Hose (F) to Supply Stop and fix tightly.



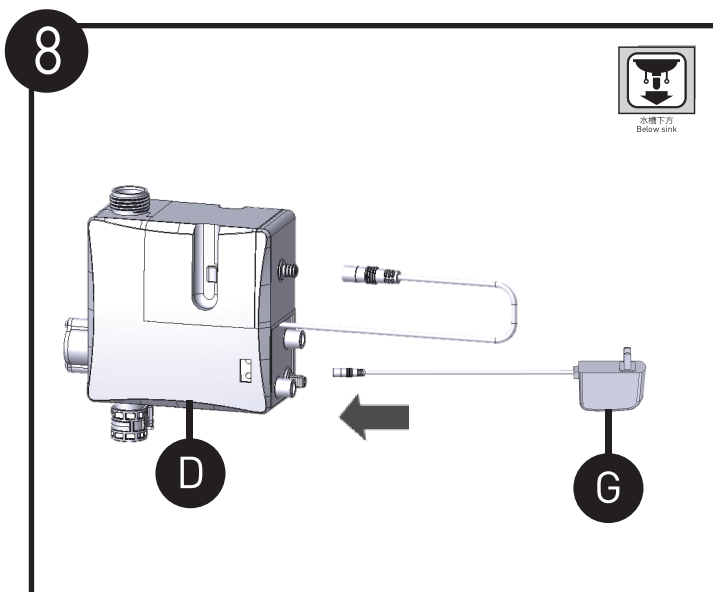
将出水管 (E) 一端锁到龙头 (A) 安装柱。

Connect the Outlet Hose (E) to the shank of Faucet (A).



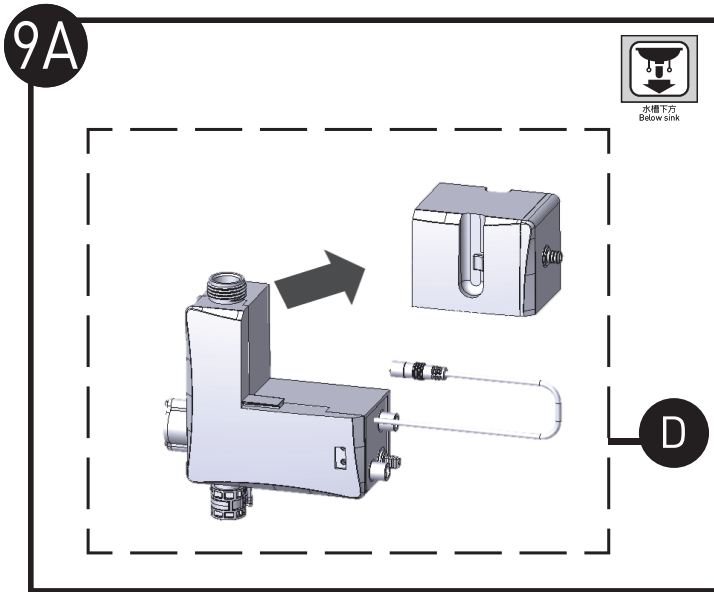
将出水管 (E) 与龙头控制盒 (D) 连接。接着, 将连接龙头的感应线与控制盒 (D) 上的接头按颜色连接。

Connect the Outlet Hose (E) to the Control Box (D), and then connect the induction wire of body to the fitting of Control Box (D).



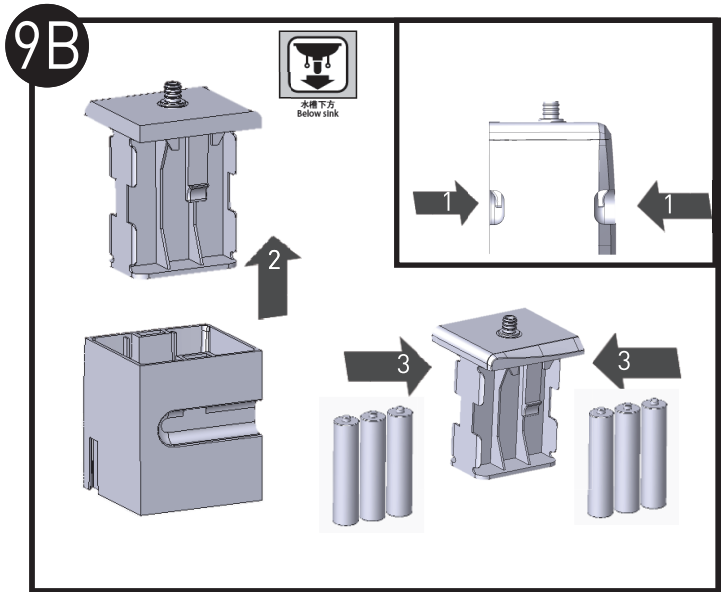
将电源适配器 (G) 与电池盒上的电源接口连接。

Connect the Adapter (G) to the power fitting of battery box.



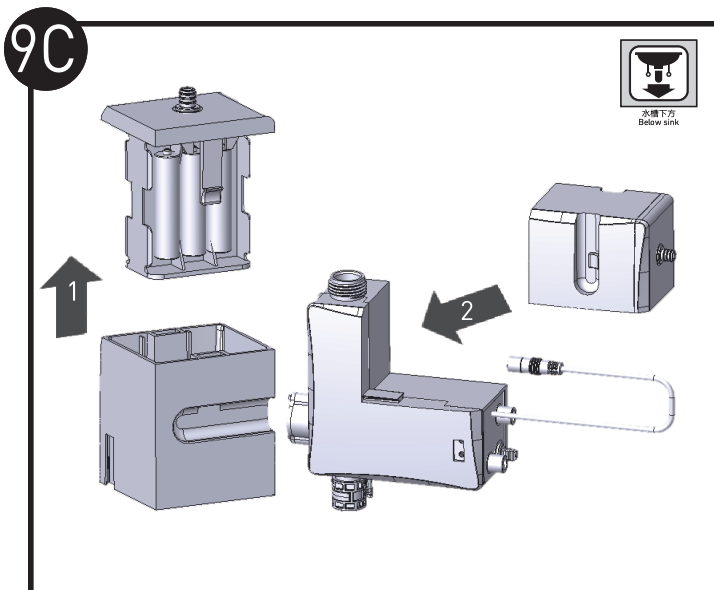
安装电池。首先从控制盒 (D) 上拆出电池盒。

Install the battery. Firstly, remove the battery box from Control Box (D).



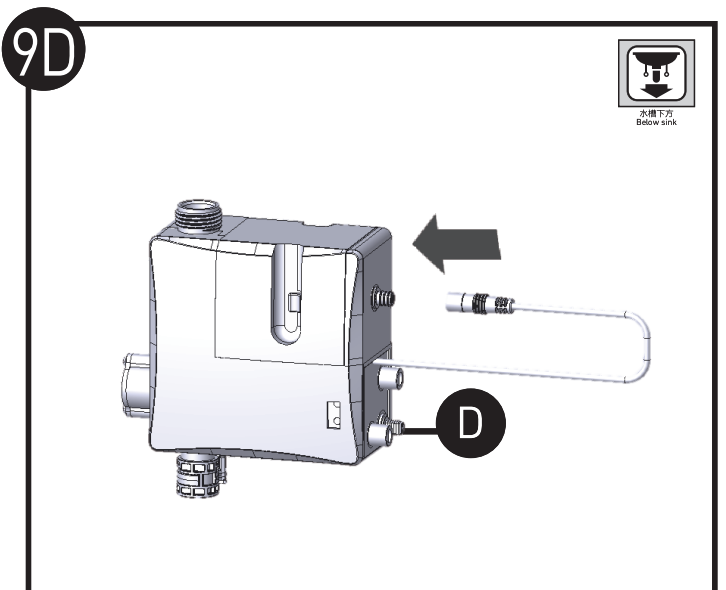
按下电池盒两侧的扣位点，将电池槽从盒子中取出，装上电池。

Press down the buckle points on both sides of the battery box, take the battery slot out of the solenoid, and then insert the battery.



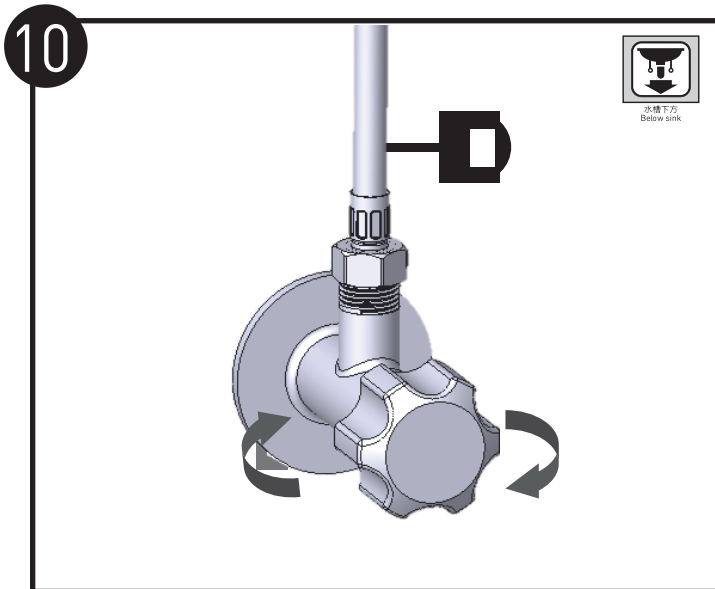
将电池槽装回电池盒中，然后将电池盒装回控制盒。

Put the battery slot back into the battery box, and then put the battery box back to the Control Box.

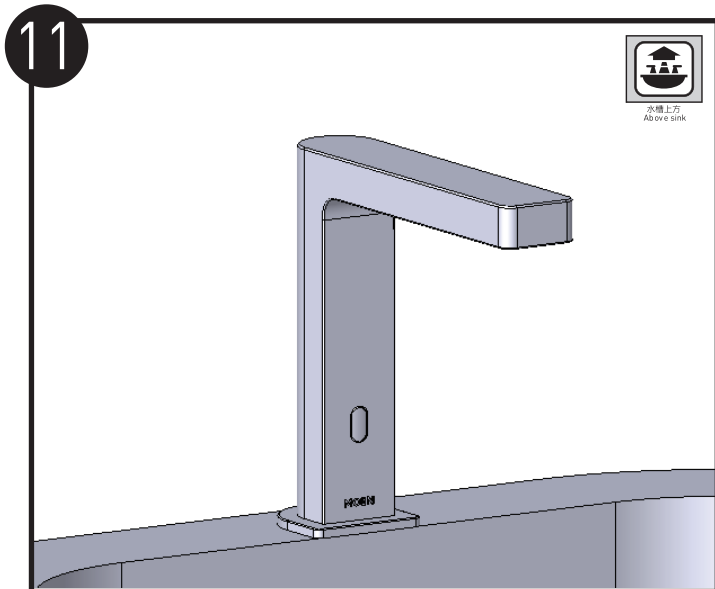


将控制盒 (D) 的电线连上电池盒接头。

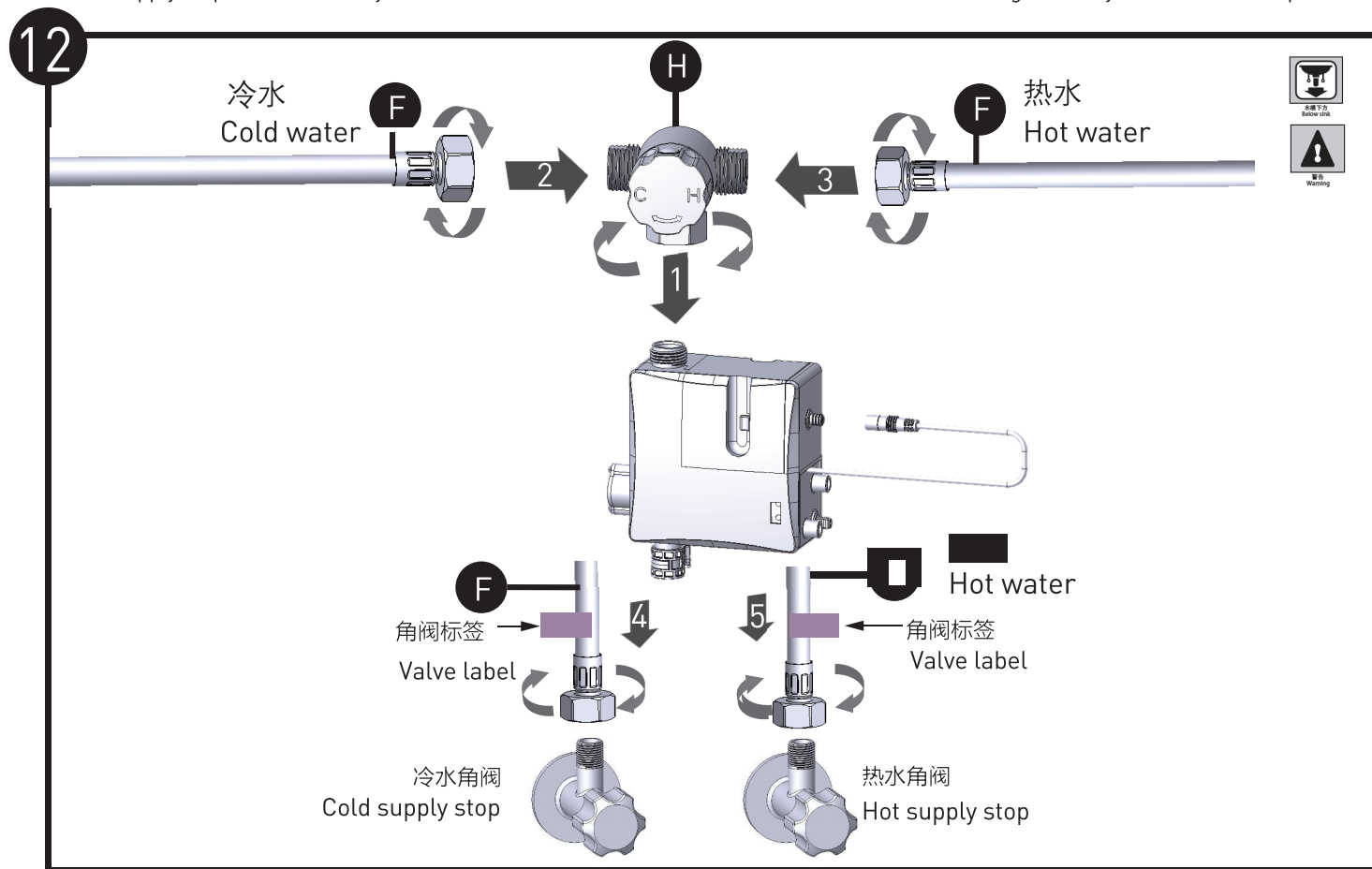
Connect the wire of Control Box (D) to the connector of battery box.



10 打开进水的角阀，检查是否漏水。
Turn on supply stop to check for any leaks.



11 接电15s后检测龙头是否正常工作。
Check if the faucet is working normally 15 seconds after power-on.



(可选步骤) 安装混水阀(H)。如果要接冷热水管，则需要安装混水阀(H)。

将混水阀 (H) 与控制盒 (D) 进水口连接。混水阀 (D) 两端分别和冷热水管 (F) 连接，将冷热水管分别和冷热进水角阀连接并固定。

警告： 若接反有烫伤及无法调温的风险。

[Optional step] Install the Mixing Valve (H). A Mixing Valve (H) is needed to connect the hot/cold water pipes.

Connect the Mixing Valve (H) to the inlet of Control Box (D). Connect the hot /cold Supply Hose (F) to the Mixing Valve (H), and then connect the cold/hot Supply Hose (F) to the cold/hot supply stop.

Warning: If the connection is reversed, there is a risk of burns and failure to adjust the temperature.

常见故障诊断 Troubleshooting

问题 Symptom	可能引起的原因 Probable Causes	建议解决方案 Recommended Action(s)
龙头不能出水 Water does not come out	1. 角阀开关未打开解决。 Supply Stop is not turned on.	打开角阀开关。 Turn on Supply Stop
	2. 控制盒电线未连接或未接好。 Power cable of Control Box is not plugged well	接好控制盒电线。 Plug the power cable of Adapter well
	3. AC适配器未接好。 AC adapter is not plugged well.	适配器接好。 Plug the power cable of Adapter well
	4. 电池未装或电池亏电。 No battery is installed or battery is low.	装入电池。 Insert batteries.
	5. 感应器未工作或损坏。 The sensor is not working or damaged.	更换龙头。 Replace the faucet with a new one.
	6. 控制盒未工作或损坏。 The Control Box is not working or damaged.	更换控制盒。 Replace the Control Box with a new one.
龙头出水流量小 Low flow	1. 软管堵塞。 The hose is clogged.	拆洗软管，去除滤网上的杂质。 Disassemble and wash the hose to remove impurities on the filter.
	2. 角阀未打开到位。 Supply Stop is not fully turned on.	将角阀全部打开。 Turn on Supply Stop fully.
	3. 混水阀未调节好（带混水阀配置）。 Mixing Valve is not adjusted well.	调节混水阀到合适流量。 Adjust the Mixing Valve into a proper place
龙头只出冷水或热水 (带混水阀配置) Water temperature is not as expected (Optional mixing valve configuration)	1. 混水阀未开到位。 Mixing Valve is not adjusted well	调节混水阀到合适流量。 Adjust Mixing Valve into a proper place.
	2. 冷水或热水角阀未打开。 Either cold or hot Supply Stop is not turned on.	将角阀全部打开。 Turn on both cold and hot Supply Stop.
龙头无法完全关闭 无法止水 The faucet cannot be completely closed, and water cannot be stopped	1. 感应器窗口有异物或水珠。 Foreign objects or water droplets are on the sensor window.	擦除掉感应窗上的异物或水珠。 Wipe off foreign objects or water droplets.
	2. 电磁阀损坏。 The Solenoid Valve is damaged.	更换电磁阀。 Replace Solenoid Valve with a new one.

产品售后保修条款

摩恩产品是在高质量标准及生产工艺下制造的，摩恩承诺为消费者购买的产品提供有期限免费保修及终身维修服务。

龙头免费保修期为：阀芯5年，电磁阀感应器2年，其它附件如淋浴杆、软管、花洒、落水、把手、装饰盖、提拉杆、混水器等保修期均为1年有限。均自消费者购买日（以摩恩产品分销商开具的发票或收据上载明日期为准）起计。

免费保修范围为产品及产品配件（如淋浴杆、软管、花洒、落水、把手、装饰盖、提拉杆、混水器等）由于材质及工艺原因而造成的故障或损坏。免费保修期内，我们将无偿为您提供维修服务及更换发生故障的产品或产品配件。摩恩的售后服务责任仅限于对故障产品的修理，而不延及您因产品故障而发生的其他损失，法律另有规定的除外。

您需了解：产品外观碰伤、刻划痕迹，以及滥用及不正当保养所导致的故障或损坏，均不属于免费保修范围。即使在免费保修期内，属下列（1）-（5）情况之一的，需酌情收取修理费用：

1. 不能出示相符的保修卡和有效购买凭证情况的，
2. 未按使用说明告知的使用方法和注意事项造成的故障，
3. 自行拆卸、维修、改装所造成的故障和损坏，
4. 由于不可抗力等外部原因引起的故障和损坏，
5. 由于运输、搬卸、挤压等造成的损坏。

对于保修期外或不在保修范围内的产品，如需维修，摩恩将酌情收取上门费、人工费及材料费。

本保修条款仅对原始消费者和酒店行业的购买者有效，并不适用于本产品工业、商业、贸易和非酒店行业的使用。

如对本保修条款内容有任何疑问，请拨打400 630 8866 咨询热线，或向当地分销商咨询。对于中国大陆以外的市场，此产品的保修及保障服务详情请咨询当地经销商。

摩恩公司对摩恩保修拥有最终解释权。

MOEN LIMITED WARRANTY

We offer limited warranty and lifetime maintenance for Moen products, which are all manufactured with high standards of workmanship.

The period of warranty shall start from the date of purchase of the product (according to the invoice or receipt issued by Moen distributors) and shall cover a period of the following: the warranty period for cartridge is 5 years, the warranty period for solenoid valve sensor is 2 years, the warranty period of other accessories such as shower bar, hose, shower, drain assembly, handle, cover, lift rod, aerator etc. is 1 year.

This warranty is your coverage against material and workmanship malfunction or defects in Moen products or components (such as shower bar, hose, shower, drain assembly, handle, cover, lift rod, aerator etc.). During the warranty period, we offer free maintenance and changing of malfunctioned products or product components. Moen's after sales service liability is limited to the maintenance of faulty items and does not cover your other losses caused by product malfunction, except for otherwise stipulated by law.

Cosmetic damages (scratches, dents, etc.) and malfunction or defects caused by abuse or improper maintenance is not covered by this warranty. Although the warranty period remains valid, in case of the following conditions (1) - (5), the maintenance cost (material cost and labor cost) shall still be charged as the case maybe:

1. Corresponding warranty card and valid invoice cannot be presented;
2. Faults were caused by the incompliance with the instructions and precautions provided in the user's manual;
3. Damages and faults were caused by self-actuated dismantling, repair and refit;
4. Faults and damages were caused by external factors such as force majeure;
5. Damages were caused by transportation, unloading and extrusion, etc.

This warranty is valid for the original consumers only (including hotel use), and excludes industrial and commercial use of the product (except for hotel use). This card is only responsible for product maintenance rather than any other liabilities.

In the event that the product requires maintenance but exceeds the warranty period, or that the product is not covered by this warranty, labor cost and material cost shall be charged as the case maybe.

Please call 400-630-8866 or contact local dealer for any question. For markets exclude Chinese mainland, the terms and conditions of warranty shall differ between product categories and countries.

Please refer to warranty stated by local distribution. Moen Incorporated shall have the final interpretation of moen warranties.

MOEN® 摩恩

合格证 Compliance Certification

感应面盆龙头
Sensor Lavatory
Faucet

产品名称
Product Name _____

检验员
Inspector _____

生产日期
Date of Production _____

富俊汇赢科技（上海）有限公司
中国（上海）自由贸易试验区新杨公路
1800弄1号4幢207室
邮编：201413

Fortune Brands Innovations (Shanghai) Co., Ltd
Room 207, Building 4, No.1, Lane 1800, Xinyang Highway,
China [Shanghai] Pilot Free Trade Zone