

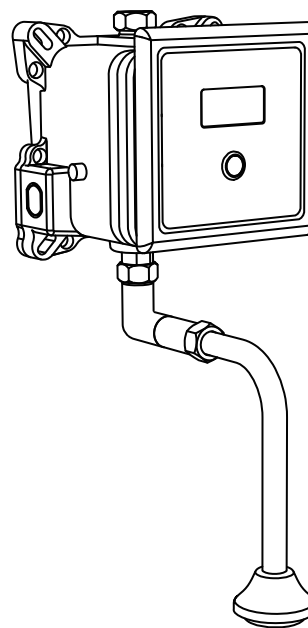
MOEN® 摩恩

小便器上进水感应冲水阀

安装说明书

Sensor Urinal Flush Valve (Upper Water Inlet)

INSTALLATION INSTRUCTIONS



图片仅供参考
(款式因型号而异)

Image is for reference only
(Style varies by model)

如需安装支持，配件丢失等，请联系MOEN。
(中国) 400-630-8866
www.moen.cn

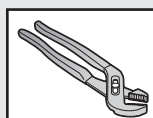
PLEASE CONTACT MOEN FIRST
For Installation Help, Missing or Replacement
Parts
(China) 400-630-8866
www.moen.cn

推荐工具

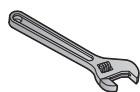
为了安全和让安装和替换变得容易，Moen建议您使用以下工具：

HELPFUL TOOLS

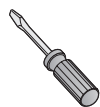
For safety and ease of replacement, Moen recommends the use of these helpful tools.



可调钳
Adjustable Pliers



活动扳手
Adjustable Wrench



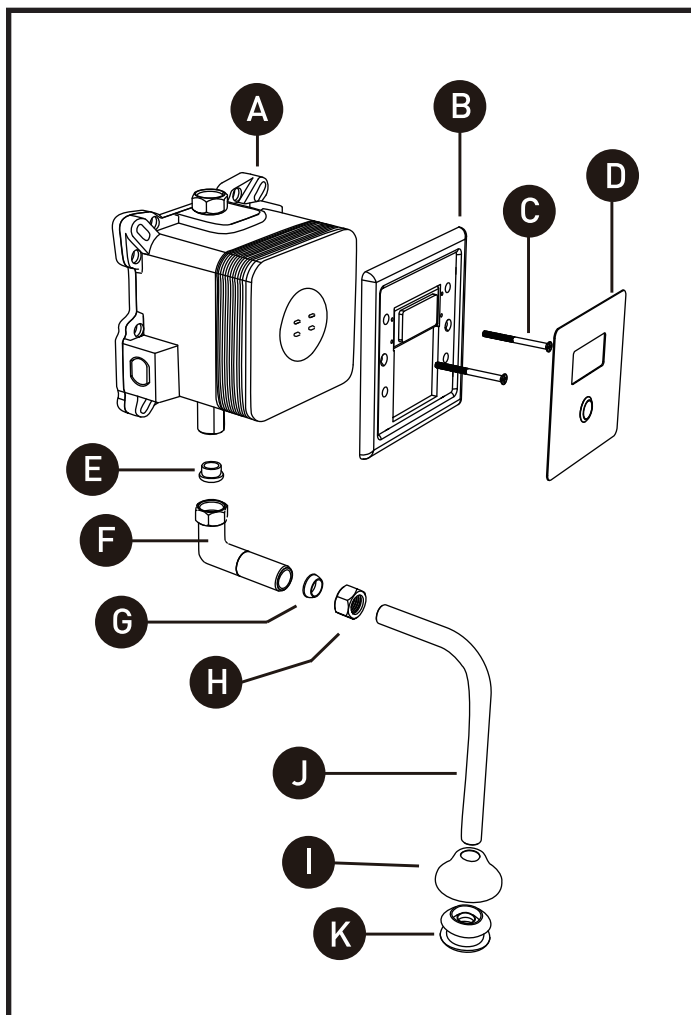
一字螺丝刀
Flathead Screwdriver



卷尺
Tape Measure

记录购买的型号：
(保存安装说明书以备将来参考)

Record Purchased Model Number:
(Save instruction sheet for future reference)



零件清单

- A. 主机
- B. 控制面板
- C. 螺丝
- D. 装饰板
- E. 密封圈
- F. 弯头
- G. 斜边密封圈
- H. 四分斜边螺母
- I. 装饰杯
- J. 七字弯管
- K. 胶塞

Parts List

- A. Control Box
- B. Control Panel
- C. Screw
- D. Stainless steel Panel
- E. Airproof Loop
- F. Elbow
- G. Bevel Edged Sirproof Loop
- H. 1/4 Bevel Edged Nut
- I. Decorative Cup
- J. "7" Type Syphon
- K. Colloid

产品功能与特性

本公司感应小便冲水器是采用红外线感应原理精心设计而成，汇聚高科技之品质。它具有：

- 智能性：自动感应，通过红外线对人体进行感知，并对便器进行冲洗。
- 自动性：使用者在小便冲水器的感应范围内无需作任何动作便可自动冲水。
- 卫生性：手不必接近器具即可达到冲洗便器的功能，方便卫生，有效消除细菌的交叉污染。
- 适用性：产品外形美观大方，安装简单方便，适用于各种新建建筑场所及旧式工程的改装。
- 手动功能：可以通过手动按钮，更加简单方便清洁厕所便器。
- 交直流共用：平时使用交流电源，停电状态时自动启用后备电源，不会因停电而影响到您的正常使用。

Function and Characteristics

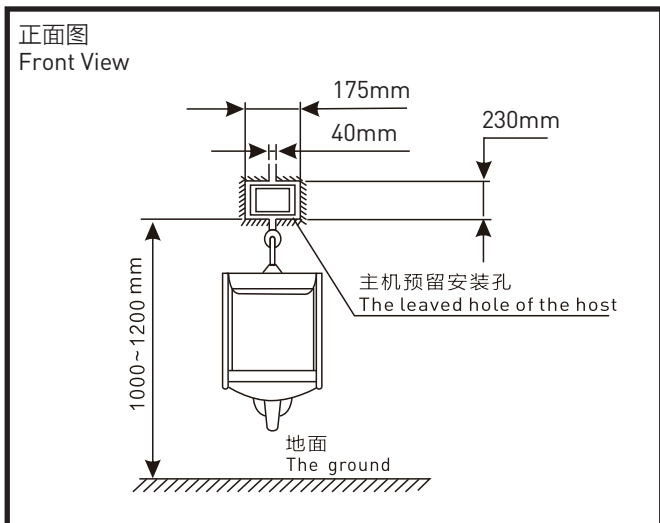
Our automatic urinal flusher is delicately designed and made with high-tech property according to infrared induction principle, which displays a new space for induction technology. The product features is following:

- Intelligent Control: Automatic induction, sensing the human body through infrared rays, and flush the toilet.
- Automatic Work: Automatic flush if only people is in the sensing range.
- Hygienic: No need for touch of the urinal flusher thus cross infection avoided.
- Adaptability: Elegant and exquisite outlook, simple and convenient installation make them suitable for all kinds of new or old buildings and places.
- Manual function: Press the button to clean the flusher become more easily and quickly.
- Power supply Backup: Second battery will continue power supply when primary AC power is not available.

产品技术参数 Technical Specification

型号 SKU	SWA987SGM	
电源 Power	AC 220V DC6V 5号碱性电池*4需自备 / AA alkaline batteries*4 sold separately	
功耗 Power Consumption	工作 Work: $\leq 4W$, 待机 Idle State: $\leq 0.2mW$	
启动水压 Water Pressure Range	0.05-0.6Mpa	
推荐工作压力 Recommended Work Pressure Range	0.1 (动压 Dynamic pressure) -0.5Mpa	
给水口径 Water Supply Diameter	G1/2"	
使用环境温度 Environment Temperature	1-55 °C	
环境相对湿度 Relative Humidity of Environment	$\leq 95\%$	
出水水温 Water Temperature	$\leq 45^{\circ}C$	
工作水温 Water Working Temperature	$\leq 75^{\circ}C$	
感应时间 Sensor Time	感应5秒以上启动装置 Automatic start over 5 seconds	
手动冲洗功能 Manual Flush Function	出厂默认冲刷时间为3秒 The factory default flushing time is 3 seconds	
冲水方式 Flushing Mode	一段冲水 (使用后冲洗) One Flushing (Flshing after used)	
感应距离 Sensor Distance	出厂距离: $70 \pm 10\%cm$ (售后遥控器可调) , 以297mm x 297mm白板测试为准 Default: $70 \pm 10\%cm$ (Remote control adjustable) according to the tests with 297mm x 297mm white board	
进水水压范围 Inlet Water Pressure Range	最低必要水压 Minimum necessary water pressure	$0.05MPa$ 且保证流动时水流量在 $0.12L/s$ 以上 $0.05MPa$, ensuring a flow of water at least $0.12L/s$
	最高水压 Maximum water pressure	$0.6MPa$ (静止时) $0.6MPa$ (still)
		静态水压 $0.17 \pm 0.01MPa$ 和 $0.55 \pm 0.01MPa$ 条件下平均冲水量: $\leq 0.5L/周期$ (内置调水阀) The static water pressure $0.17MPa \pm 0.01MPa$ and $0.55MPa \pm 0.01MPa$ average flush

安装前注意事项 Precautions before Installation

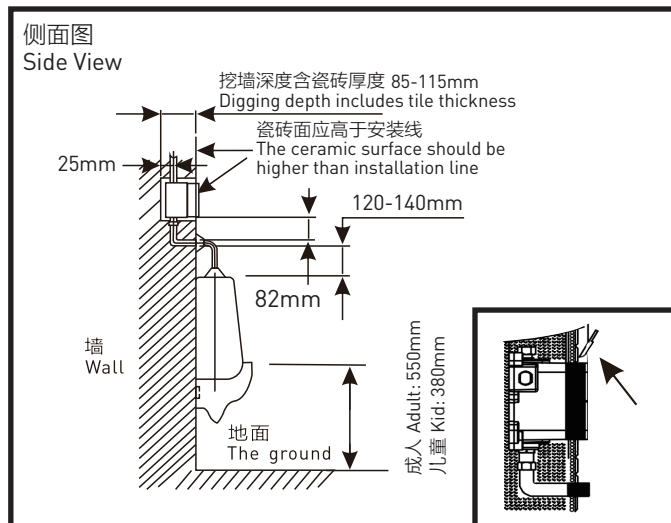


预留安装位置

注意：具体安装尺寸仅供参考。

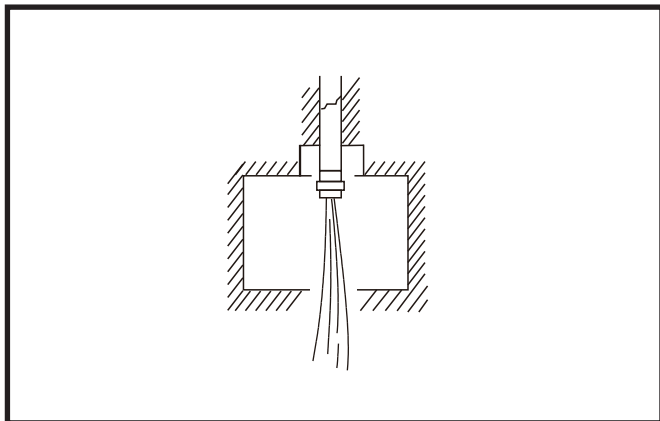
Reserve the Installation Position

NOTE: The specific installation dimensions are for reference only.



如有超出最终完工墙面部分请切除。

If there is any part beyond the final finished wall, please cut it off.



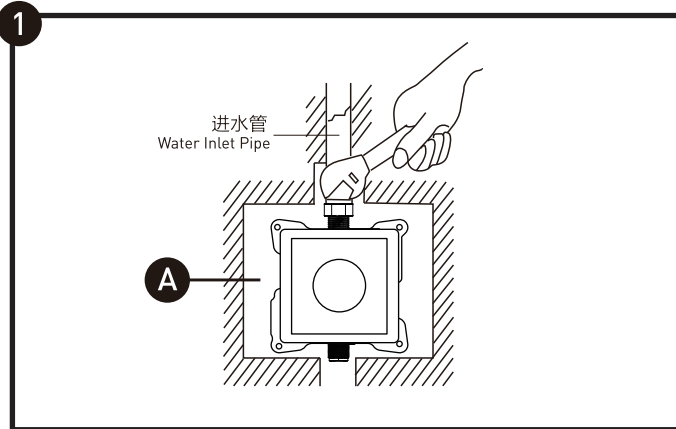
冲洗管道

注意：冲洗管道前应做好对小便斗的防护，以防冲洗时将杂物冲到小便斗中引起堵塞。

Clean the Pipe

NOTE: Protect the frairage hole of the urinal before washing, not to flush the sundries down to the hole.

安装步骤 Installation Steps



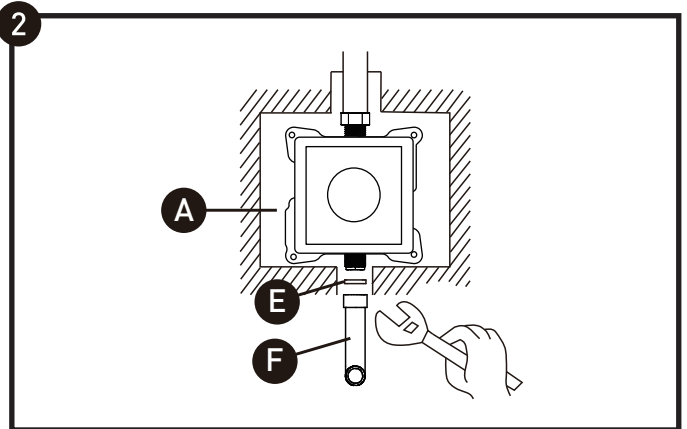
将主机 (A) 标有进水口的一端活接 (G1/2") 拧到准备好的进水管上。

注意：活接内必须放入密封圈，安装完毕后打开水源确认没有漏水后，方可进入下一步安装工作。（产品在出厂时已配有平面垫）

Screw up the Water Inlet Joint (G1/2") on the Control Box (A) to the Water Inlet Pipe.

NOTE: The sealing ring must be put into the movable Joint, make sure there is no water drop when connect the water supply after installation. Then start the following installation.

(Airproof Loop are additional with the Urinal Flusher)

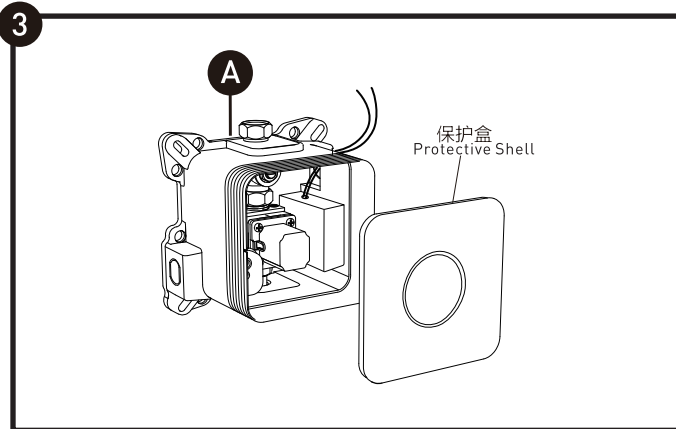


将弯头 (F) 带有活接 (G1/2") 的一端拧到主机 (A) 的出水口上。

注意：活接内需放入密封圈 (E)。

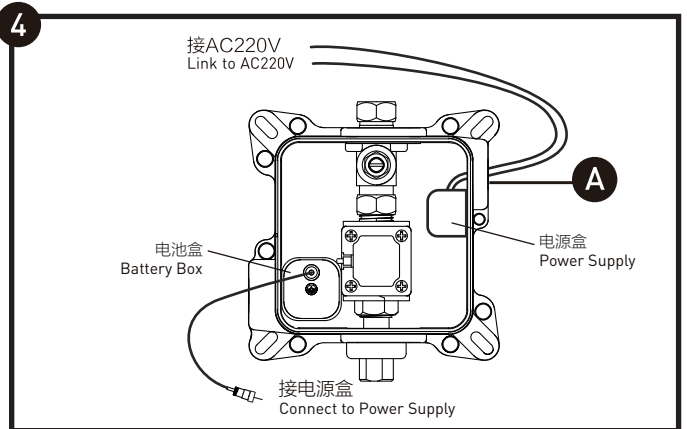
Screw the removable Joint (G1/2") of the Elbow (F) to the Water Outlet on the Control Box (A).

NOTE: The removable Joint must be lined with Airproof Loop (E).



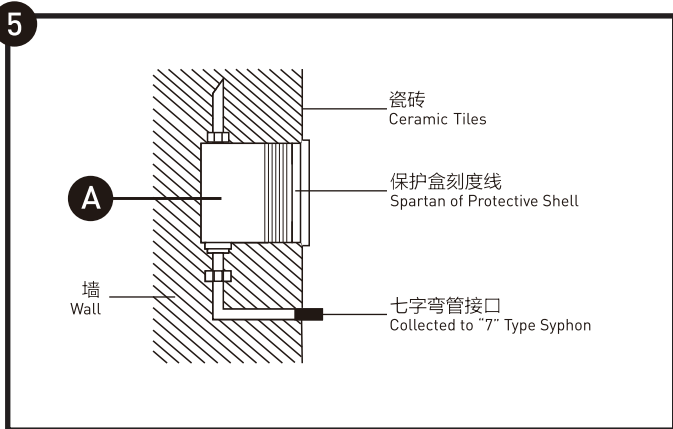
拆下主机 (A) 上的保护盒。

Take apart the Protective Shell of the Control Box (A).



通过侧面圆形窗口，按预留线槽将电线引至主机 (A) 内，将电源盒的红线与AC220V电源线火线相接，电源盒的蓝线AC220V电源线零线相接。将电池盒安装好后，将电池盒的公头和电源盒的母头相接。**注意：1. 为避免有出点及漏电等安全隐患，此步骤仅能由有资质的专业电工操作。2. 请确保在断电状态下进行接线，电线接口使用绝缘胶布包好。**

Through the round window on the side, lead the wires to the Control Box (A) according to the reserved wire trough. Connect the red wire of the power box to the live wire of the AC220V power cord, and the blue wire of the power box to the neutral wire of the AC220V power cord. After installing the battery box, connect the male connector of the battery box and the female connector of the power supply box. **NOTE: 1. To avoid safety hazards such as electric shock and leakage, this step can only be operated by qualified professional electricians. 2. Please connect wire in a power-off state, and the wire interface is covered with insulating tape.**

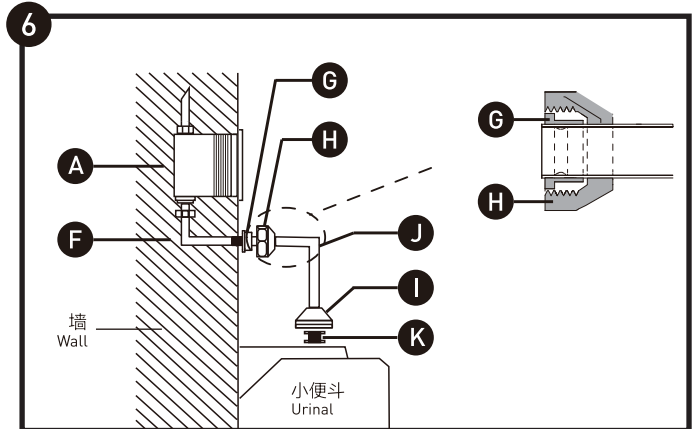


将保护盒装回主机 (A) 上, 用水泥将空隙填满, 并贴上瓷砖。

注意: 瓷砖面必须不低于保护盒的刻度线。

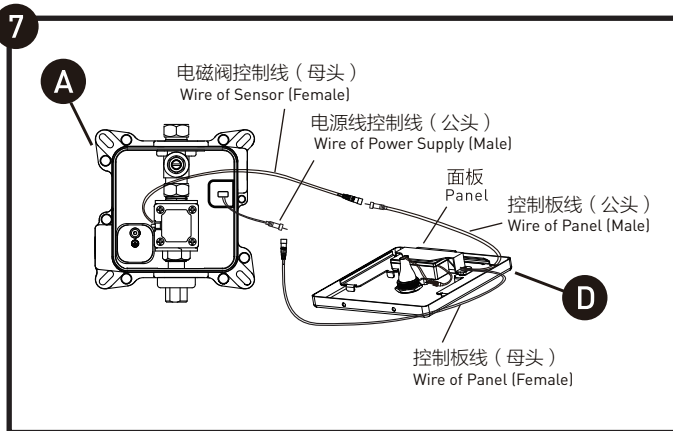
Mount the Protective Shell of the Control Box (A) and stuff into the gap with cement, and attach on the Ceramic Tiles.

NOTE: The surface of the Ceramic Tiles must not below Spartan of the Protective Box.



- 将塞胶 (K) 塞入小便斗上方的孔洞。
 - 参考上图将装饰杯 (I) 套入七字弯管 (J)。
 - 将七字弯管 (J) 一端插到塞胶 (K) 中。
 - 用斜边螺母 (H) 将七字弯管 (J) 另一端固定在弯头 (F) 的出水接口。
 - 分别将装饰杯 (I) 盖好。
- 注意:** 斜边螺母 (H) 内需放入斜边密封圈 (G)。

- Install the Colloid (K) on the Urinal Flusher.
 - Install the Decorative Cup (I) on the "7" Type Syphon (J).
 - Insert the "7" Type Syphon (J) to the Colloid (K).
 - Fix the "7" Type Syphon (H) on the Elbow (J) Water Outlet with the 1/4 Bevel Edged Nut (F).
 - Cover the Decorative Cup (I).
- NOTE:** The 1/4 Bevel Edged Nut (H) should be put inside with the Bevel Edged Airproof Loop (G).

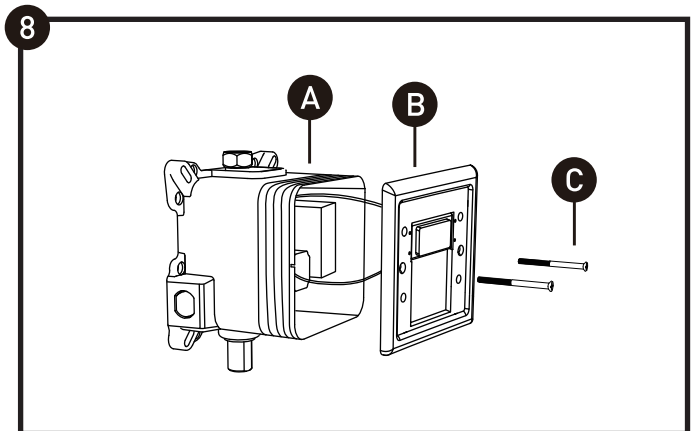


待水泥填充干硬后, 拆下主机 (A) 上的保护盒和控制板 (D) 的面板, 将控制板 (D) 上的黑色公头与主机中 (A) 的电磁阀母头相连接。

控制板 (D) 上的红色母头与电源盒上的公头相连接。

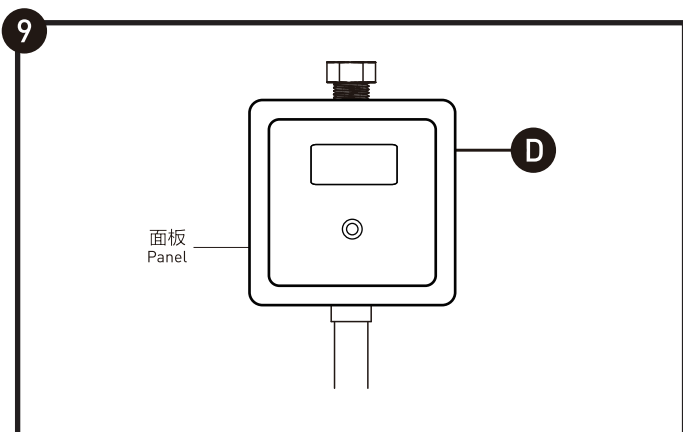
After the cement is dry, remove the protective shell of Control Box (A) and the panel of the Control Panel (D), and connect the black male connector on the Control Panel (D) to the female solenoid valve in the Control Box (A).

Connect the red female connector on the Control Panel (D) to the male connector on the power box.



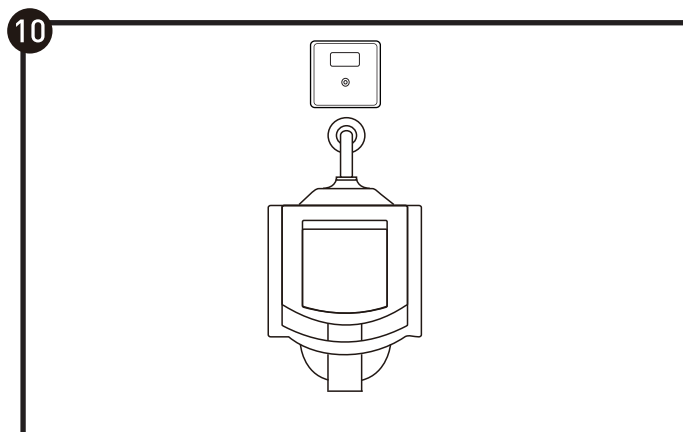
将固定板 (B) 上的安装孔与主机 (A) 上的安装孔对准, 然后用 M4 圆头螺丝 (C) 将固定板 (B) 拧紧固定。

Align the installation holes on the fixed plate (B) with the installation holes on the host (A), and then tighten the fixed plate (B) with M4 round head screws (C).



检查线路是否连接牢固，将面盖扣上固定板上。

Check the wire is connected well, buckle the cover onto the retaining plate.



安装完毕后，通电进行实验冲水。

After installation, power on for experiment flushing.

使用说明

使用方法

当冲水器感应到使用者离开约3秒后，冲水器将自动进行一次清洗冲水。使用者也可以按下手动按钮，对厕所便斗进行清洗。冲水器在24小时内无使用时，会自动冲水一次。

Operation Instruction

Use Instruction

When the flusher senses that the user is away for about 3 seconds, the flusher will automatically flush. The user can also press the manual button to clean the toilet. The flusher will automatically flush once when it is not used within 24 hours.

使用注意事项

- 为了避免故障发生的可能性，请勿将产品安装在其他红外线感应器前。
- 感应器窗口如有污物请及时清理干净，以免影响使用效果。
- 如果在使用时发现冲洗水量不足时，请清洗其过滤器。
- 如果发现小便冲水器有不感应或电源接触不良时，请马上关掉电源找相关的专业人士检修，以免发生触电或其他事故。

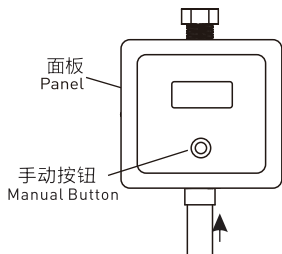
Warning

- Please don't install in front of high-strength reflection sensors.
- Please clean the sensor window regularly so as to avoid the bad induction effect.
- Please clean the filter if you find the outlet volume isn't large enough.
- If you find that the flush is not induction or poor power contact, please turn off the power supply and ask the professional to avoid the accident problem.

功能调节

把面板拆卸下来后，进行功能调节。

水量调节



- 先把面板拆下，再用“—”字形螺丝刀调节调节阀（如图所示），左旋方向水量增大反之则小。

感应距离调节

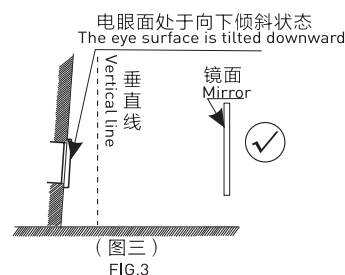
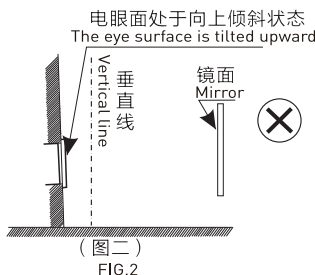
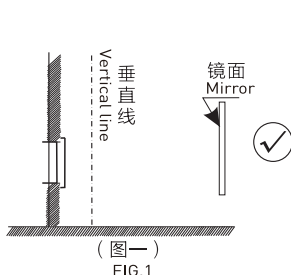
- 遇安装现场反光很强的情况，例如镜面、金属等反光材质较多，则联系售后相应调大感应距离。

感应窗指示灯

- 在刚通电的2分钟内，当电眼有感应时指示灯亮起，无感应时指示灯熄灭。2分钟后，当电眼有感应时指示灯只闪烁一次。

注意：

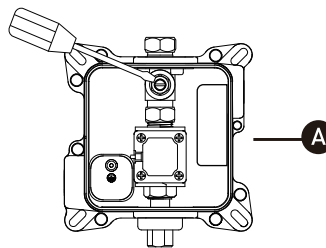
- 冲水感应器被安装在正对镜面反射物（如镜子、不锈钢墙等）情况下，如果电眼感应面偏离垂直面向上时（如图二），将收到强镜面反射影响，可能使感应器长期属于感应状态。因此安装时，要尽量使电眼感应面与镜面平行或稍微向下倾斜。（如图一、三）
- 不能安装在靠近强电磁干扰大型设备（变电站变压器、大型中央空调）范围，如有此现象，只能根据现场具体情况，作特殊处理。



Functions Adjustment

Remove the panel and adjust the functions.

Water Volume Adjustment



- Adjust the value with “—” screwdriver (as illustrated). Turn left to get mass water, whereas right for lessening.

Sensor Distance Adjustment

- When encountering situations where there is strong reflection at the installation site, such as excessive reflective materials such as mirrors and metals, contact after-sales service to increase the sensing distance accordingly.

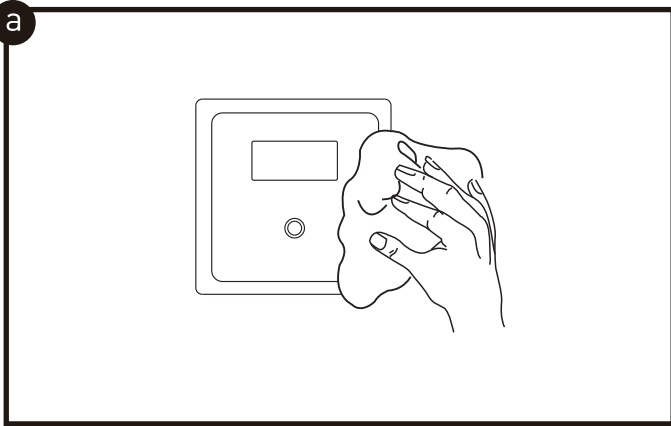
Sensor Indicator

- In the first two minutes of power on, the light is on when the sensor has induction, the light is off when the sensor has no induction. After two minutes, the light will flash one time when be inducted each time.

NOTE:

- When the flushing sensor is installed facing a specular reflecting object (such as a mirror, stainless steel wall, etc.), if the sensor surface of the electric eye deviates from the vertical direction upward (as shown in Figure 2), it will be affected by strong specular reflection, which may cause the sensor to The device is in the induction state for a long time. Therefore, when installing, try to make the electric eye sensing surface parallel to the mirror surface or slightly tilted downwards. (As shown in Figures 1 and 3)
- It cannot be installed close to large equipment with strong electromagnetic interference (substation transformers, large central air conditioners) (as shown in Figure 2). If this phenomenon occurs, only will take special measures based on the specific conditions of the site.

维修保养及注意事项 Maintenance and Service

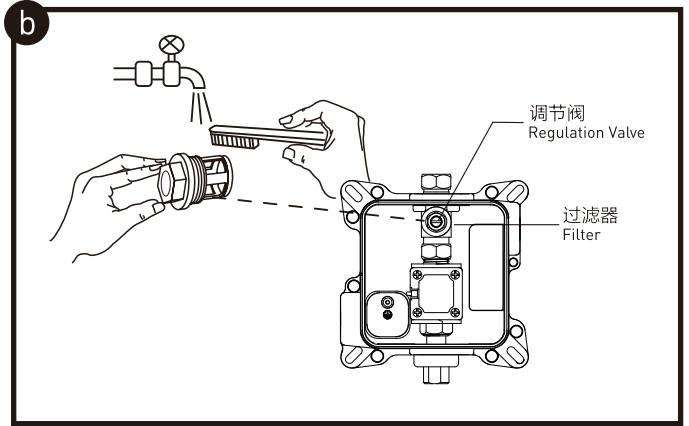


清洁

如果感应窗口前有障碍物或污物将影响正常感应时，必须及时清理障碍物和清洁感应窗口。

Surface Cleaning

Clean the sensor window so as to keep good induction effect.

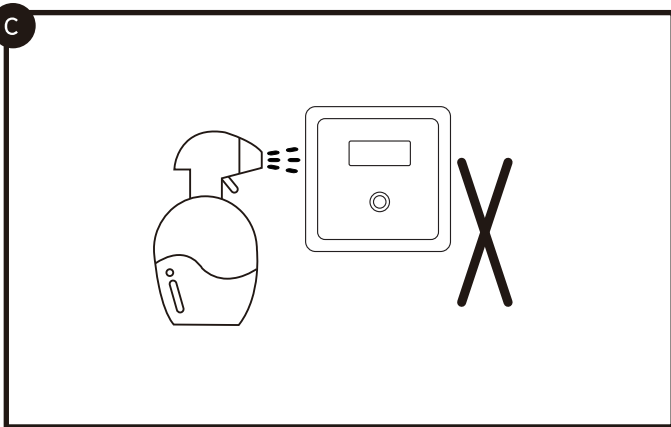


清洗过滤器

用“—”字螺丝刀将调节阀调至关断水源，然后逆时针拧下过滤器，用牙刷清洗干净后装回。

Filter Cleaning

Adjust the regulation valve to turn off water supply with the “—” screwdriver, then unscrew the filter, clean it with a toothbrush and reinstall it.

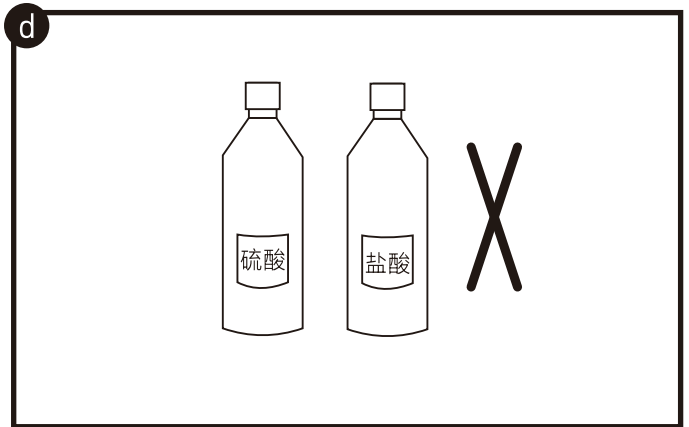


严禁直接用水清洗

由于主机内含有电子控制线路，严禁直接用水冲洗表面，以防发生事故。

Do not Flush the Surface Directly

Do not flush it directly, otherwise it is likely to cause electric leakage or spoil the circuit in the Control Box.



严禁使用腐蚀性清洁剂

因控制板及感应窗口使用塑料制品及不锈钢面板，在清洗器具时，请勿使用具有腐蚀性的清洁剂，以免损坏和影响外观。

Do not Clean with Caustic Detergent

It should be kept away from sulphate acid, hydrochloric acid, hydrochloric acid or other kinds of caustic agents.

简单故障分析与排除

Troubleshooting Guide

当器具出现以下现象时可能不是器具故障所引起，请按下表说明进行分析和排除。

Please check and do as the following instruction when the following phenomenon happens.

现象 Symptoms	原因 Cause	检查分析 Check and Analyze	处理措施 Corrective Action
不出水 No water flow	供电不正常 Abnormal power	检查是否有正常电源供应到感应器 Check whether there is normal power supply for the sensor or not	接上电源 Connect to power supply
	供水不正常 Abnormal water	检查水源 Check the water supply	打开供水系统 Turn on the water supply switch
	连接器接触不良 Bad contact of the connector	检查连接器是否拧紧或内有异物 See if the connector is turned tight or if there is any foreign matter	拧紧或清除 Turn tight or eliminate the matter
	过滤器堵塞 There is something stopping the filter	有异物堵塞 The filter is stopped by foreign matter	清洗过滤器 Clean the filter
水流不停 Water flow don't stop	电磁阀胶膜上有异物 There is outer matter on the inductor		清洗胶膜 Clean the plastic membrane
水量小 Too little water flow	过滤器堵塞 There is something stopping the filter		清洗过滤器 Clean the filter
	调节阀调节过小 Regulating valve adjustment is too small		反时针调调节阀 Adjust the regulating valve counterclockwise

产品售后保修条款

摩恩产品是在高质量标准及生产工艺下制造的，摩恩承诺为消费者购买的洁具产品提供有期限免费保修及终身维修服务。冲水阀免费保修期为1年有限。均自消费者购买日（以摩恩产品分销商开具的发票或收据上载明日期为准）起计。

免费保修范围为产品及产品配件由于材质及工艺原因而造成的故障或损坏。免费保修期内，我们将无偿为您提供维修服务及更换发生故障的产品或产品配件。摩恩的售后服务责任仅限于对故障产品的修理，而不延及您因产品故障而发生的其他损失，法律另有规定的除外。

您需了解：产品外观碰伤、刻划痕迹，以及滥用及不正当保养所导致的故障或损坏，均不属于免费保修范围。即使在免费保修期内，属下列（1）-（5）情况之一的，需酌情收取修理费用：

1. 不能出示相符的保修卡和有效购买凭证情况的，
2. 未按使用说明告知的使用方法和注意事项造成的故障，
3. 自行拆卸、维修、改装所造成的故障和损坏，
4. 由于不可抗力等外部原因引起的故障和损坏，
5. 由于运输、搬卸、挤压等造成的损坏。

对于保修期外或不在保修范围内的产品，如需维修，摩恩将酌情收取上门费、人工费及材料费。

本保修条款仅对原始消费者和酒店行业的购买者有效，并不适用于本产品工业、商业、贸易和非酒店行业的使用。

如对本保修条款内容有任何疑问，请拨打400 630 8866 咨询热线，或向当地分销商咨询。

MOEN LIMITED WARRANTY

We offer limited warranty and lifetime maintenance for Moen products, which are all manufactured with high standards of workmanship.

The period of warranty shall start from the date of purchase of the product (according to the invoice or receipt issued by Moen distributors) and shall cover a period of the following: the warranty period for flush valve is 1 year.

This warranty is your coverage against material and workmanship malfunction or defects in Moen products or components (such as shower bar, hose, shower, drain assembly, handle, cover, lift rod, aerator etc.). During the warranty period, we offer free maintenance and changing of malfunctioned products or product components. Moen's after sales service liability is limited to the maintenance of faulty items and does not cover your other losses caused by product malfunction, except for otherwise stipulated by law.

Cosmetic damages (scratches, dents, etc.) and malfunction or defects caused by abuse or improper maintenance is not covered by this warranty. Although the warranty period remains valid, in case of the following conditions (1) - (5), the maintenance cost (material cost and labor cost) shall still be charged as the case may be:

1. Corresponding warranty card and valid invoice cannot be presented;
2. Faults were caused by the incompliance with the instructions and precautions provided in the user's manual;
3. Damages and faults were caused by self-actuated dismantling, repair and refit;
4. Faults and damages were caused by external factors such as force majeure;
5. Damages were caused by transportation, unloading and extrusion, etc.

This warranty is valid for the original consumers only (including hotel use), and excludes industrial and commercial use of the product (except for hotel use). This card is only responsible for product maintenance rather than any other liabilities.

In the event that the product requires maintenance but exceeds the warranty period, or that the product is not covered by this warranty, labor cost and material cost shall be charged as the case may be.

Please call 400-630-8866 or contact local dealer for any question.

MOEN® 摩恩	
合格证 Compliance Certification	
产品名称 Product Name	小便器上进水感应冲水阀 Sensor Urinal Flush Valve (Upper Water Inlet)
检验员 Inspector	_____
生产日期 Date of Production	_____
富俊汇赢科技（上海）有限公司 中国（上海）自由贸易试验区新杨公路 1800弄1号4幢207室 邮编：201413	
Fortune Brands Innovations (Shanghai) Co., Ltd Room 207, Building 4, No. 1, Lane 1800, Xinyang Highway, China (Shanghai) Pilot Free Trade Zone	