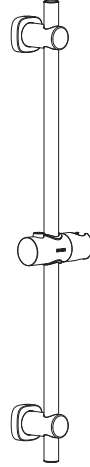


MOEN® 摩恩

淋浴升降杆 安装说明书

Shower Sliding Bar INSTALLATION INSTRUCTIONS



图片仅供参考
(款式因型号而异)

Image is for reference only
(Style varies by model)

如需安装支持，配件丢失等，请联系MOEN。
(中国) 400-630-8866
www.moen.cn

PLEASE CONTACT MOEN FIRST
For Installation Help, Missing or Replacement
Parts
(China) 400-630-8866
www.moen.cn

推荐工具

为了安全和让安装和替换变得容易，Moen建议您使用以下工具：

HELPFUL TOOLS

For safety and ease of replacement, Moen recommends the use of these helpful tools.



防护镜
Safety Glasses



钳子
Pliers



电钻
Electric Drill



十字螺丝刀
Phillips Screwdriver



手电筒
Flashlight



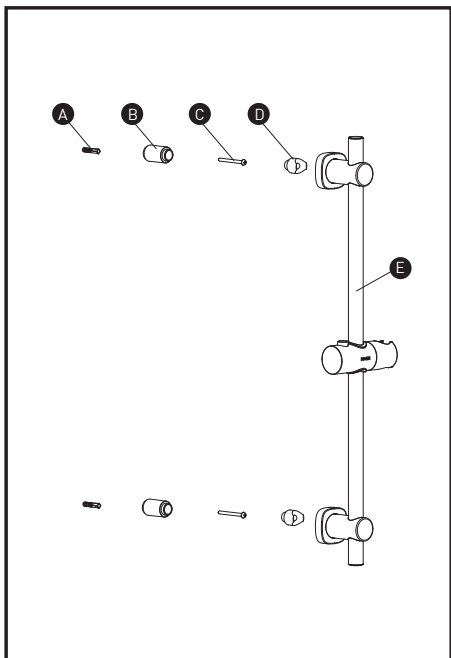
锤子
Hammer



密封胶
Plumber's Putty

记录购买的型号：
(保存安装说明书以备将来参考)

Record Purchased Model Number:
(Save instruction sheet for future reference)



零件清单

- A. 膨胀管 x2
- B. 固定座 x2
- C. 自攻螺钉 x2
- D. 橡胶垫 x2
- E. 滑杆组件 x1

Parts List

- A. Expansion tube x2
- B. Fixed seat x2
- C. Self-tapping screws x2
- D. Rubber mat x2
- E. The slide bar assembly x1

敬告:在墙上钻任何孔时，请确保在您准备钻孔的地方没有隐藏的管道和电缆!
申明:本公司保留更改产品结构不另行通知的权利。

安装注意事项:

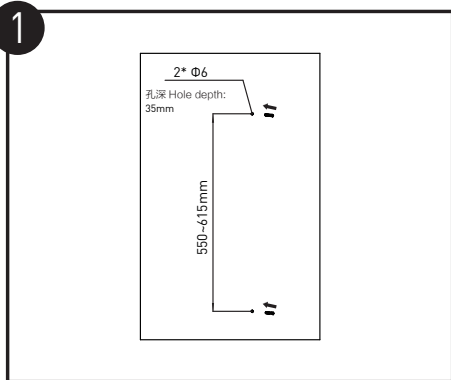
- 1.本产品已经通过出厂检测及调试，请勿自行拆卸。
- 2.安装前，请务必先清除墙体预埋水管内的杂物及污泥，以免影响出水功能。
- 3.本产品的工作压力: 0.05MPa~0.6MPa,推荐工作压力0.2MPa~0.5MPa.
- 4.当您在钻孔和安装时请注意安全。

WARNING:Please ensure there are no hidden service pipes and cables where you intend to drill.

DECLARE:We reserve the rights to alter the structure of the product without any notice.

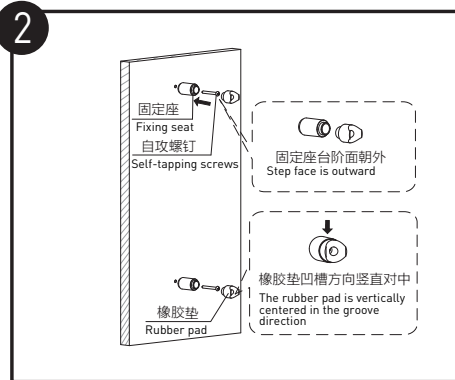
IMPORTANT FOR INSTALL ATION:

- 1.The product has been passed the functionality test before ex-factory,please do not disassemble by yourself at will.
- 2.The working pressure of this product is 0.05MPa~0.6MPa.The recommended water pressure is 0.2MPa~0.5MPa.
- 3.Please be carefull of your security while dilling and installing.



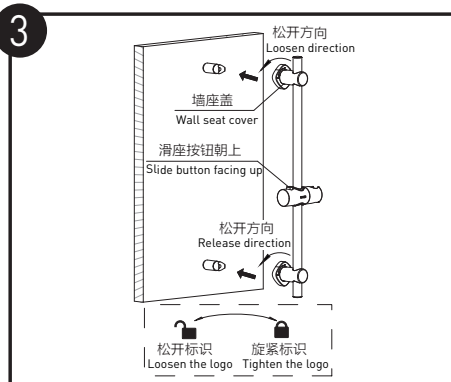
1. 根据使用者的高度，在墙上选取合适位置。按图示用 $\Phi 6$ 的钻头在墙上钻两个深度为35mm的孔。孔距可按需而定，推荐550mm，不超过615mm。
2. 将膨胀管打进孔内，膨胀端面不能凸出墙面。

1. According to the height of the user, select a suitable position on the wall. Drill 2 holes with a depth of 35mm on the wall with a $\Phi 6$ drill bit. The hole distance depends on requirement, 550mm is recommended, but no more than 615mm.
2. The expansion tube should be drilled into the hole, and the expansion end face cannot protrude from the wall.



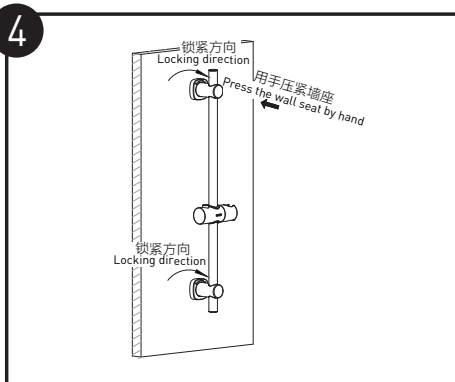
1. 分别用自攻螺钉将固定座锁在上下膨胀管上（固定座台阶面朝外），确保螺钉锁紧，固定座不可晃动。
2. 将两个橡胶垫压入固定座内，橡胶垫凹槽方向竖直对中。

1. Use the self-tapping screws to lock the fixing seat on the upper and lower expansion pipes [the step face of the fixing seat is outward], make sure the screws are locked, and the fixing seat cannot be shaken.
2. Press the two rubber pads into the fixing seat, and make the rubber pad vertically centered in the groove direction.



取出滑杆组件（滑座按钮朝上），如图示，分别把上下两个墙座盖按标识逆时针松开，调整上下两个墙座在管上的位置，分别对准固定座后装上去，确保装配到位。

Take out the slide bar assembly (slide button facing upwards), as shown in the figure, respectively loosen the upper and lower wall seat covers counterclockwise according to the logo, adjust the position of the upper and lower wall seats on the tube, and align them with the fixing seats respectively. Go up and make sure the assembly is in place.



朝墙壁方向用手压紧墙座，同时按墙座盖上的标识方向顺时针旋紧上下两个墙座盖，确保整体升降杆稳固不晃动。

Press the wall base by hand toward the wall, and at the same time, tighten the upper and lower wall base covers clockwise in the direction of the logo on the wall base cover to ensure that the overall lifting rod is stable and does not shake.

使用说明

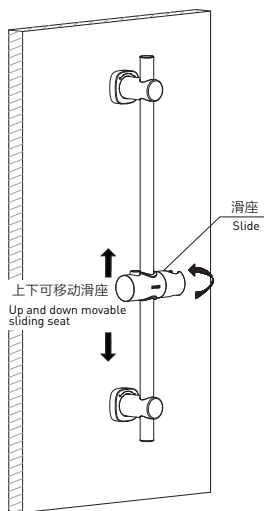
- 按下滑座按钮，可上下移动滑座，以调节高度，调到合适位置松开按钮即可。
- 右侧支撑架可绕轴心旋转。

注意：滑座承重<1.5KG。

Instructions for Use:

- Press the sliding seat button to move the sliding seat up and down to adjust the height, and then release the button when it is adjusted to a suitable position.
- The right support frame can rotate around the axis.

Note: The sliding seat bearing capacity is less than 1.5KG.



产品售后保修条款

摩恩产品是在高质量标准及生产工艺下制造的，摩恩承诺为消费者购买的洁具产品提供有期限免费保修及终身维修服务。

淋浴杆免费保修期为1年有限。均自消费者购买日（以摩恩产品分销商开具的发票或收据上载明日期为准）起计。免费保修范围为产品及产品配件由于材质及工艺原因而造成的故障或损坏。免费保修期内，我们将无偿为您提供维修服务及更换发生故障的产品或产品配件。摩恩的售后服务责任仅限于对故障产品的修理，而不延及您因产品故障而发生的其他损失，法律另有规定的除外。

您需了解：产品外观碰伤、刻划痕迹，以及滥用及不正当保养所导致的故障或损坏，均不属于免费保修范围。即使在免费保修期内，属下列（1）-（5）情况之一的，需酌情收取修理费用：

1. 不能出示相符的保修卡和有效购买凭证情况的，
2. 未按使用说明告知的使用方法和注意事项造成的故障，
3. 自行拆卸、维修、改装所造成的故障和损坏，
4. 由于不可抗力等外部原因引起的故障和损坏，
5. 由于运输、搬运、挤压等造成的损坏。

对于保修期外或不在保修范围内的产品，如需维修，摩恩将酌情收取上门费、人工费及材料费。

本保修条款仅对原始消费者和酒店行业的购买者有效，并不适用于本产品工业、商业、贸易和非酒店行业的使用。如对本保修条款内容有任何疑问，请拨打400 630 8866 咨询热线，或向当地分销商咨询。

MOEN LIMITED WARRANTY

We offer limited warranty and lifetime maintenance for Moen products, which are all manufactured with high standards of workmanship.

The period of warranty shall start from the date of purchase of the product (according to the invoice or receipt issued by Moen distributors) and shall cover a period of the following: the warranty period for shower bar is 1 year.

This warranty is your coverage against material and workmanship malfunction or defects in Moen products or components. During the warranty period, we offer free maintenance and changing of malfunctioned products or product components. Moen's after sales service liability is limited to the maintenance of faulty items and does not cover your other losses caused by product malfunction, except for otherwise stipulated by law.

Cosmetic damages (scratches, dents, etc.) and malfunction or defects caused by abuse or improper maintenance is not covered by this warranty. Although the warranty period remains valid, in case of the following conditions (1) - (5), the maintenance cost (material cost and labor cost) shall still be charged as the case may be:

1. Corresponding warranty card and valid invoice cannot be presented;
2. Faults were caused by the incompliance with the instructions and precautions provided in the user's manual;
3. Damages and faults were caused by self-actuated dismantling, repair and refig;
4. Faults and damages were caused by external factors such as force majeure;
5. Damages were caused by transportation, unloading and extrusion, etc.

This warranty is valid for the original consumers only (including hotel use), and excludes industrial and commercial use of the product (except for hotel use). This card is only responsible for product maintenance rather than any other liabilities.

In the event that the product requires maintenance but exceeds the warranty period, or that the product is not covered by this warranty, labor cost and material cost shall be charged as the case may be.

Please call 400-630-8866 or contact local dealer for any question.

MOEN® 摩恩

合格证
Compliance Certification

产品名称 淋浴升降杆
Product Name Shower Sliding Bar

检验员 _____
Inspector

生产日期 _____
Date of Production

富俊汇赢科技（上海）有限公司
中国（上海）自由贸易试验区新杨公路
1800弄1号4幢207室
邮编：201413

Fortune Brands Innovations (Shanghai) Co., Ltd
Room 207, Building 4, No. 1, Lane 1800, Xinyang Highway,
China (Shanghai) Pilot Free Trade Zone